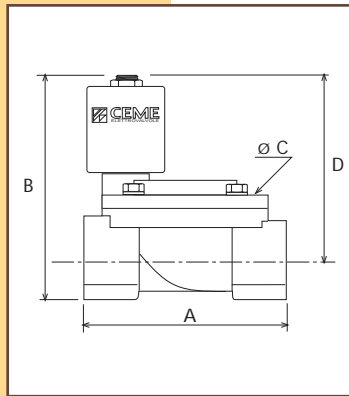


CARATTERISTICHE SPECIFICATIONS



ATTACCHI PIPES in → out	Ø mm	CODICE CODE	KV m ³ /h	M.O.P.D. bar		DIMENSIONI/DIMENSIONS mm				PESO/WEIGHT Kg
				AC	DC	A •	B •	C •	D •	
1/4"	10	8512	1.86	10	10	61	73	48	60	0.500
3/8"	10	8513	1.86	10	10	61	73	48	60	0.450
1/2"	12	8514	2.10	10	10	61	73	48	60	0.400
3/8" NPT	12	8523	1.86	10	10	61	73	48	60	0.450
1/2" NPT	12	8524	2.10	10	10	69	73	48	60	0.410

CARATTERISTICHE ELETTRICHE
ELECTRICAL INFORMATION

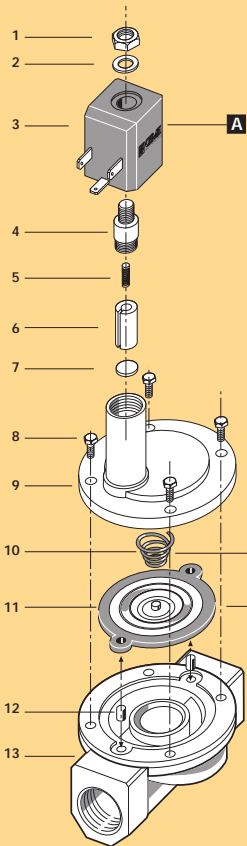
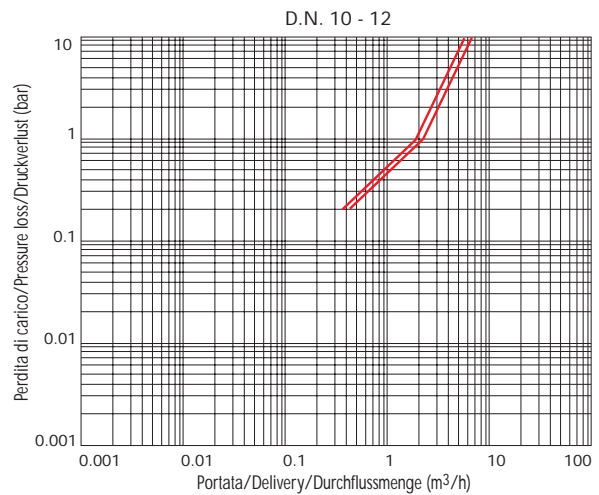
						POTENZA/POWER			
						NOMINALE HOLDING	SPUNTO IN RUSH		
V~	12	24	48	110	230	400	50 60 Hz	11VA	14,5VA
V=	12	24	48	110				9W	

Per dettagli costruttivi sulle bobine vedi capitolo "INFORMAZIONI DI PROGETTO"
For construction details of the coil see chapter "PROJECT INFORMATION"
Ausführliche Daten über die Ventilsolen finden Sie unter Abschnitt "TECHNISCHE INFORMATIONEN"

MAX TEMPERATURA MAX TEMPERATURE

FLUIDI/FLUIDS				AMBIENTE/AMBIENT
NBR	EPDM	EPDM/KTW	FPM	80°C
90°C	130°C	130°C	150°C	

DIAGRAMMA PERDITA DI CARICO PRESSURE LOSS DIAGRAM



Dado	Lock nut	Mutter
Rondella	Washer	Beilagscheibe
Bobina	Coil	Magnetspule
Nucleo fisso	Tube top	Kern
Molla	Spring	Feder
Nucleo mobile	Plunger	Plunger
Pastiglia	Seal	Dichtung
Vite	Screw	Schraube
Coperchio	Valve body top	Deckel
Molla	Spring	Feder
Membrana	Diaphragm	Membrane
Bussola	Bush	Buchse
Corpo	Valve body base	Grundkörper

RICAMBI	SPARE PARTS	ERSATZTEILE
Bobina	Coil	Magnetspule
Molla	Spring	Feder
Membrana	Diaphragm	Membrane



ELETTROVALVOLA SERVOCOMANDATA 2/2 VIE N.C.
SOLENOID VALVE PILOT OPERATED 2/2 WAY N.C.
SERVOGESTEUERTES MAGNETVENTIL 2/2 WEGE S.G.



KTW

CARATTERISTICHE GENERALI

PRESSIONE MINIMA DIFFERENZIALE DI FUNZIONAMENTO 0,25 bar

PARTI A CONTATTO CON IL FLUIDO

TENUTA

NBR a richiesta FPM - EPDM

EPDM-KTW tenuta adatta e certificata DVGW per l'intercettazione di acqua potabile

OTTONE

CORPO

ORGANI INTERNI

ACCIAIO INOX

FLUIDI

ARIA - ACQUA - OLII LEGGERI

VALVOLA UNIDIREZIONALE

VALVOLA ISPEZIONABILE

VALVOLA FORNITA CON

CONNETTORE TRIPOLARE UNI ISO 6952 (DIN 43650B)- IP65

POSIZIONE DI MONTAGGIO

Qualsiasi; sconsigliata quella con bobina rivolta verso il basso

TEMPERATURA AMBIENTE

80°C, in D.C. per temperature superiori a 40°C, le performance (M.O.P.D.) potrebbero diminuire

ESECUZIONI SPECIALI

VERSIONE ANTI COLPO D'ARIETE CON TEMPO DI CHIUSURA PIU' LENTO

GENERAL FEATURES

MINIMUM DIFFERENTIAL WORKING PRESSURE 0,25 bar

PARTS IN CONTACT WITH THE FLUID

SEALING

NBR on request FPM - EPDM

EPDM-KTW sealing approved and DVGW certified for interception of potable water

BRASS

BODY

INTERNAL PARTS

STAINLESS STEEL

FLUIDS

AIR - WATER - LIGHT OILS

ONE WAY DIRECTION VALVE

SERVICEABLE VALVE

VALVE SUPPLIED WITH

THREE POLE PLUG CONNECTOR UNI ISO 6952 (DIN 43650B)-IP65

MOUNTING POSITION

Any, the position with the coil downwards is not recommended.

AMBIENT TEMPERATURE

80°C, in D.C. for temperatures higher than 40°C, the performances (M.O.P.D.) could decrease.

SPECIAL EXECUTIONS

VERSION WITH WATER HAMMER DEVICE FOR SLOWER CLOSING TIME.

ALLGEMEINE MERKMALE

MINIMALER DIFFERENTIALARBEITSDRUCK 0,25 bar

MEDIUMS BERUEHRTE TEILE

DICHTUNG

NBR auf Nachfrage FPM - EPDM

EPDM-KTW Dichtung DVGW-KTW zertifiziert fuer den Trinkwassereinsatz.

MESSING

KOERPER

INNERE ELEMENTE

EDELSTAHL

MEDIEN

LUFT - WASSER - LEICHTE OELE

UNIDIREKTIONALES VENTIL

VENTIL WARTUNGSFREUNDLICH

LIEFERUMFANG

DREIPOLIGER STECKER UNI ISO 6952 (DIN 43650B) -IP65

MONTAGEPOSITION

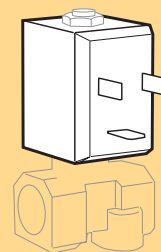
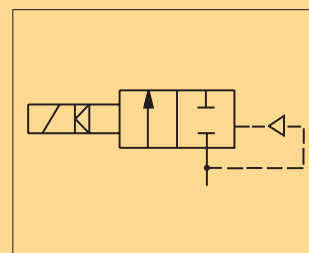
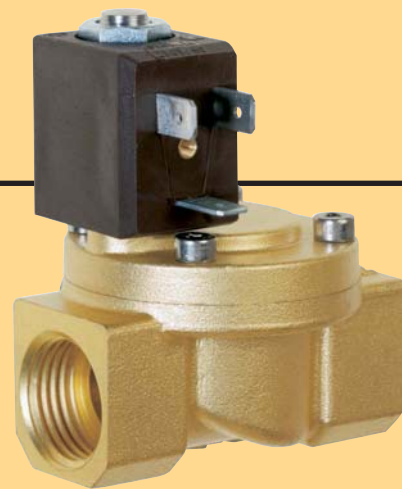
Keine Einschränkungen. Fuer Montage mit dem Spulenkopf senkrecht nach unten, auf Anfrage.

UMGEBUNGSTEMPERATUR

80°C, im D.C.- Betrieb koennen Temperaturen ueber 40°C, die Schaltkrafte (M.O.P.D.) des Ventils beeintraehtigen.

SONDERAUSFUEHRUNGEN

VERSION LANGSAM SCHLIESSEND.



BOBINA TIPO B4
COIL TYPE B4
SPULE TYP B4

serie 85