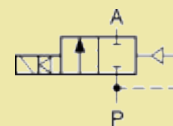




WWW.GAS-AS.CZ

Model B27 G6/4 DN40



Ports	Orifice size [mm]	Flow coefficient Kv [l/min] water (p = 1 bar)	Differential pressure [bar]		Material		Mass [kg]	Coil type	Model	Voltage	Power [W]	Order code
			min	max	body	seal						
G6/4	40	350	2	50	Brass	PTFE	2.2	TM35	B27	230/AC	7	316271
										115/AC	10	316273
										48/AC	7	316275
										24/AC	7	316277
										24/DC	7	316279

