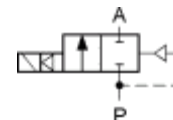




WWW.GAS-AS.CZ

Model M2451 G1/2 DN12



Ports	Orifice size [mm]	Flow coefficient Kv [l/min]	Differential pressure [bar]		Material		Mass [kg]	Coil type	Model	Voltage	Power [W]	Order code
			min	max	body	seal						
G1/2	12	40	0	10	brass	NBR	0.43	TM30	M2451	230/AC	7	301702
										24/AC	7	301732
									24/DC	12	301700	
						EPDM		TM30	M2451	230/AC	7	301703
									TM35	M2451	200/DC	10
												24/DC
FPM	TM35	M2451	24/DC	12	301731							

