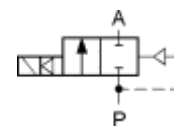




WWW.GAS-AS.CZ

Model M246 G1/2 DN10 (STEAM SERVICE)



Ports	Orifice size [mm]	Flow coefficient Kv [l/min]	Differential pressure [bar]		Material		Mass [kg]	Coil type	Model	Voltage	Power [W]	Order code
			min	max	body	seal						
G1/2	10	20	0.5	9	Brass	PTFE	0.49	TM30	M246	230/AC	7	340610
										115/AC	10	340660
										48/AC	7	340529
										24/AC	8	340630
										24/DC	12	340640
										12/DC	10	340650

