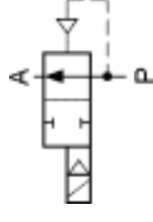




WWW.GAS-AS.CZ

Model M24KNO G1/2 DN 10



Ports	Orifice size [mm]	Flow coefficient Kv [l/min] water (p = 1 bar)	Differential pressure [bar]		Material		Mass [kg]	Coil type	Model	Voltage	Power [W]	Order code
			min	max	body	seal						
G1/2	10	20	0.3	12	Brass	NBR	0.42	TM30	M24KNO	230/AC	10	349516
											10	349566
											13	349535
G1/2	10	20	0.3	12	Brass	EPDM	0.42	TM30	M24KNO	230/AC	10	349517
											10	349567
											10	349537
G1/2	10	20	0.3	12	Brass	FPM	0.42	TM30	M24KNO	380/AC	10	349547
											10	349572
											10	349512
G1/2	10	20	0.3	10	Brass	FPM	0.42	TM30	M24KNO	24/DC	10	349560
											10	349520
											10	349530
G1/2	10	20	0.3	20	Brass	FPM	0.59	TM35	M24KNO	24/DC	10	349540
											10	349541
											12	349741

