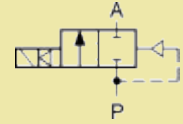


## Model M255C G3/4 DN18



[<<<Previous page](#)

Ports	Orifice size [mm]	Flow coefficient Kv [l/min] water (p = 1 bar)	Differential pressure [bar]		Material		Mass [kg]	Coil type	Model	Voltage	Power [W]	Order code
			min	max	body	seal						
G3/4 + hose nipple 20 mm	8	90	0.3	8	PA	NBR	0.18	TM25	<b>M255C</b>	230/AC	4	<b>352612</b>
										115/AC	6	<b>352653</b>
										24/AC	5	<b>352631</b>
										24/DC	6	<b>352637</b>

