

# MACH 11 VALVES

The Mach 11 in-line valves with M7 threaded connection come in the following versions:

- 5/2 monostable and bistable
- 5/3 with closed, open or pressure centres.

Control:

- pneumatic
- solenoid/pneumatic 24 V

With an exceptional compact design only 11 mm wide, and excellent high performance, these valves can be used in numerous applications in industrial automation.



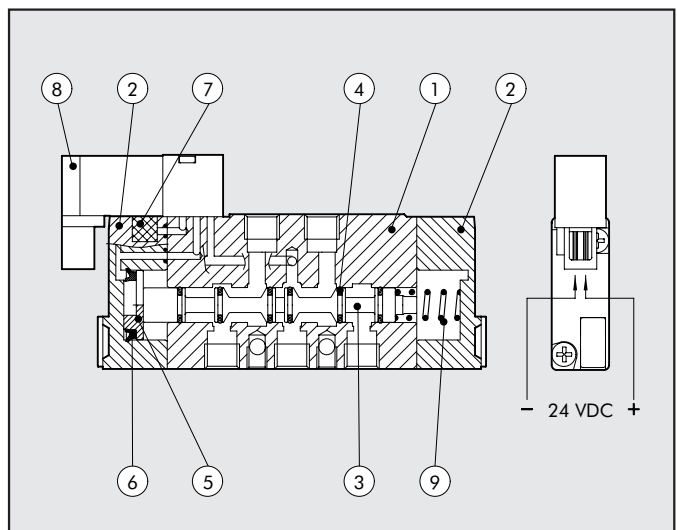
2

## TECHNICAL DATA

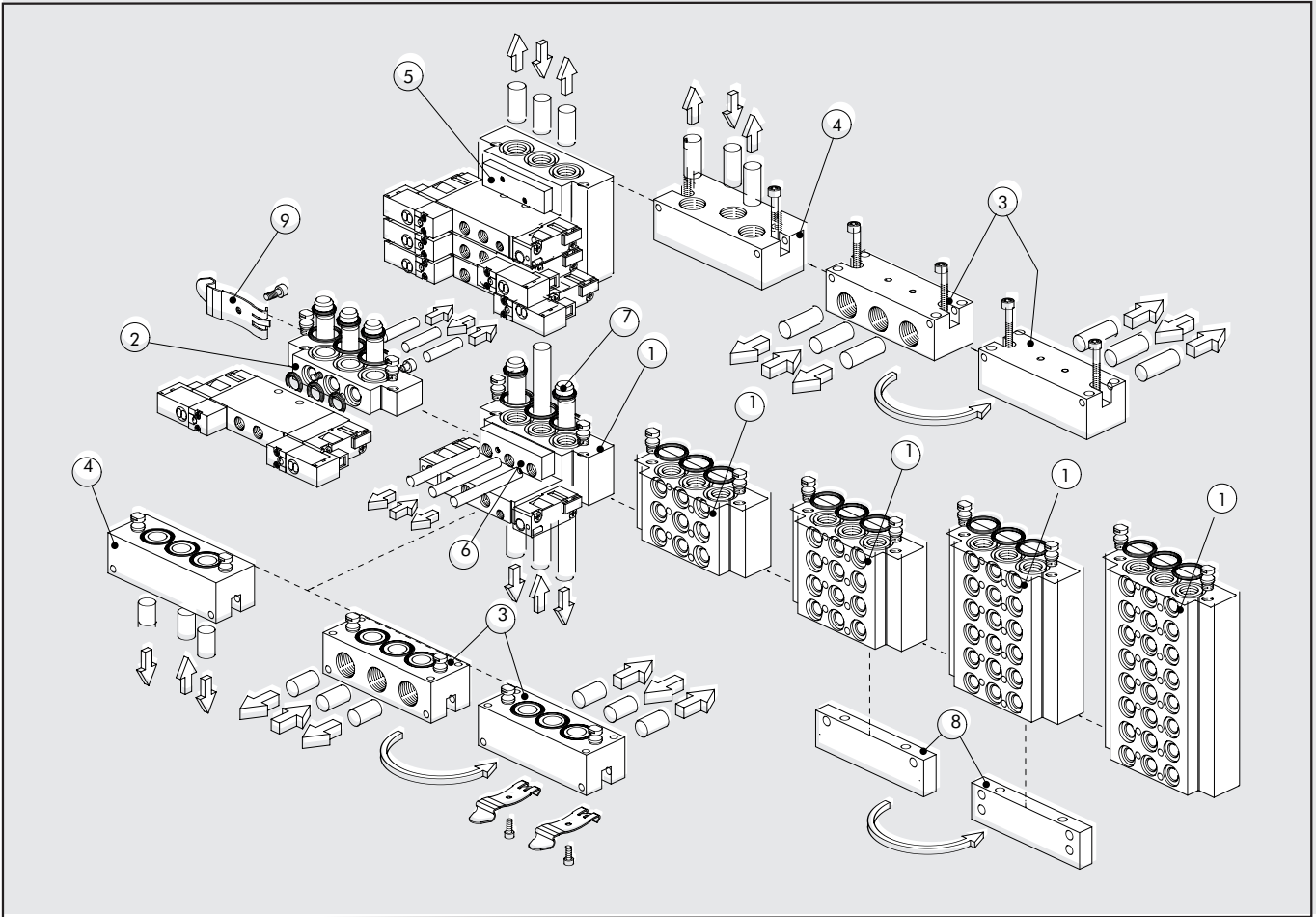
Valve port thread	M7		
Pilot thread	M5		
Maximum external diameter of gaskets	mm	M5: Ø 11 mm M5: Ø 9 mm	
Operating temperature range	°C	-10 °C ÷ +60 °C	
Fluid	Filtered air without lubrication; lubrication, if used, must be continuous		
Screw for valve wall-mounting	M3		
Flow rate at 6 bar ΔP 1 bar	NI/min	400 NI/min	
Pressure range	bar	Electric	Pneumatic
		- monostable: 2 ÷ 7 bar	- monostable control pressure values: 2 ÷ 10 bar
		- bistable: 1 ÷ 7 bar	- bistable control pressure values: 1 ÷ 10 bar
		- 5/3: 2/7 bar	- control pressure 5/3: 2 ÷ 10 bar
			- valve: vacuum ÷ 10 bar
Voltage range	24 VDC ± 10%		
Flow rate	1,2 W		
Insulation class	F155		
Degree of protection	IP 51*		
Solenoid rating	100% ED		
TRA/TRR monostable at 6 bar	ms	10 ms / 45 ms	4 ms / 9 ms
TRA/TRR bistable at 6 bar	ms	22 ms / 22 ms	4 ms / 4 ms
TRA/TRR 5/3 monostable at 6 bar	ms	22 ms / 22 ms	4 ms / 4 ms
*IP 65 on request			

## COMPONENTS

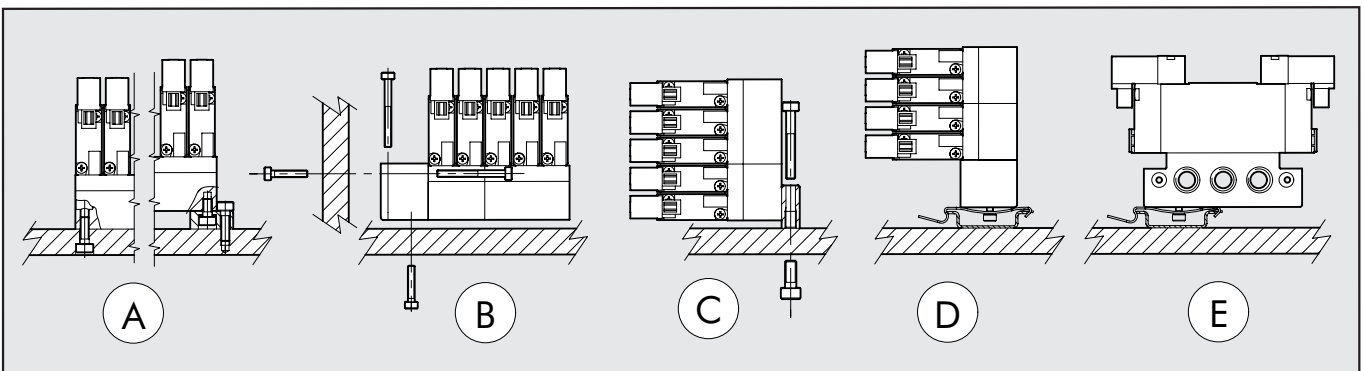
- ① VALVE BODY: Aluminium
- ② CONTROL/END CAP: HOSTAFORM®
- ③ SPOOL: Aluminium
- ④ GASKETS: Polyurethane
- ⑤ PISTONS: HOSTAFORM®
- ⑥ PISTON GASKET: Polyurethane
- ⑦ FILTER: sintered bronze
- ⑧ PILOT: with integrated coil
- ⑨ SPRING: special steel
- ⑩ REMOVABLE IDENTIFICATION PLATE



## MACH 11 MODULARITY



## HOW TO FIX THE BASE



## KEY TO CODES

M	S	V	1	5	S	O	B	0	0	2 4 V D C	
FAMILY		PORT		FUNCTION		OPERATORS 14		RESETTING		FURTHER DETAILS	
MSV	Mini-solenoid valve	1	M7	5	5/2	SO	Solenoid valve	B	bistable	00	5/2 standard
MPV	Mini pneumatic valve			6	5/3	SE	electric pilot-assisted pneumatic	S	mechanical spring	CC	closed centres
						PN				OC	open centres
										PC	pressure centres
											24VDC

Per versioni con comando elettrico IP65 contattare i nostri Uffici Commerciali.